



THE MAHALA



Blueprint Homes WA Pty Ltd
257 Balcatta Road, Balcatta WA 6021
PO Box 772, Balcatta WA 6914
P 6241 4888 W blueprinthomes.com.au

Disclaimer: This information is accurate at time of printing. All details are to be confirmed during your consultation with your Blueprint representative and your final plans and addenda will represent what you have purchased.
04/2022_BP0727_BRN1904



12 Boudicca Drive, Forrestdale (Mahala Estate)

9440 1800
blueprinthomes.com.au

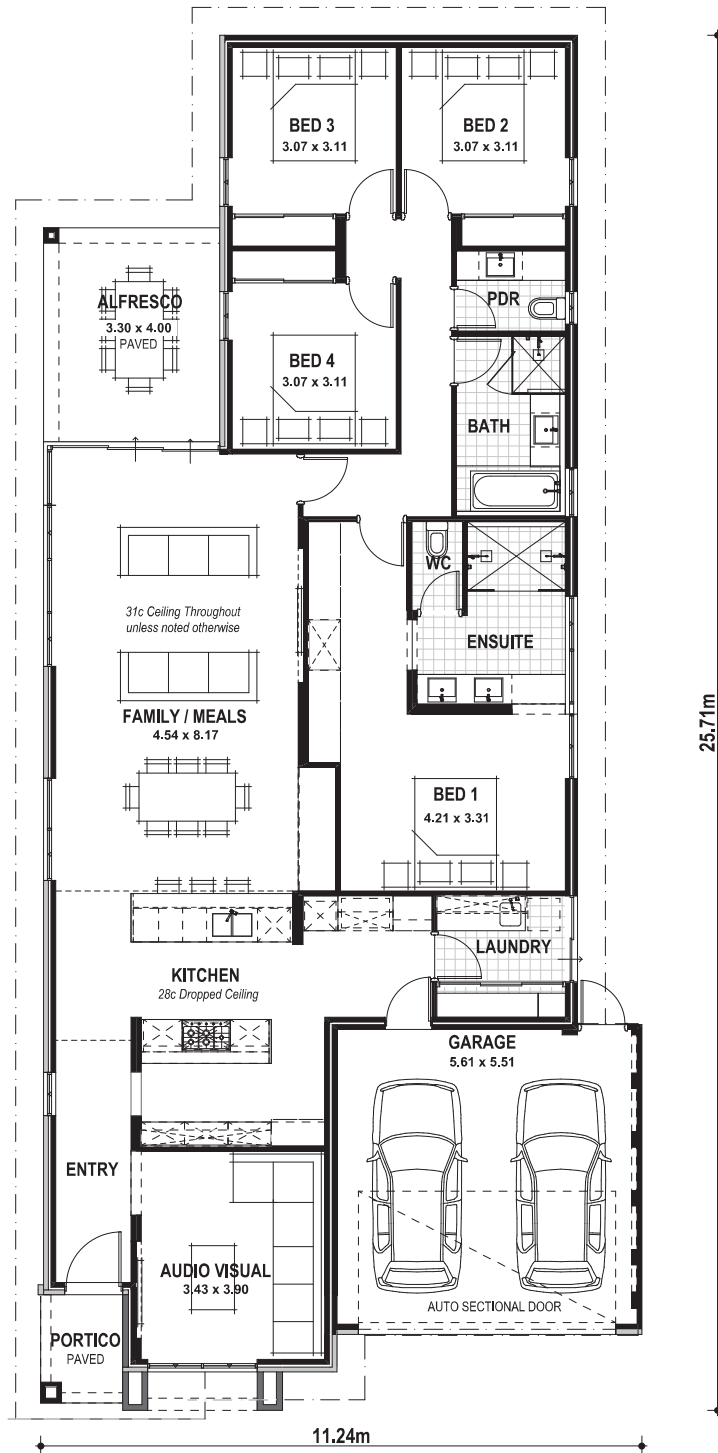
THE MAHALA

VITAL STATS

Living area 207m²
(including Alfresco)

Total area 242m²
(excluding eaves)

Scale 1:100



NAME _____

SIGNATURE _____

DATE / / _____

THE MAHALA SPECIFICATION (AS DISPLAYED)

Standard Inclusions

Home Owners Indemnity Insurance
H.I.A. fixed Building Contract
6 Star compliant home
4 month maintenance period
Re-Peg to site (to new subdivisions)
Contour survey completed on your block
Building Permit and Water Corporation application fees included
Termite treatment and certificate
Double clay brick construction
2 course Blueprint Homes range external face bricks
Rolled brick joints in cream mortar
Your choice of full COLORBOND® metal roof range
COLORBOND® fascia, downpipes and slotted gutters
25° roof pitch as standard
H2 treated roof timbers
Painting specification includes ceilings and cornice, doors and door frames, eaves, woodwork and meterbox

Feature Front Elevation

Acrylic render to Front Elevation (including Portico pier), left hand side Elevation (including left hand side of Bedroom 3/Bedroom 4), rear wall of Family/Meals and Alfresco pier (excludes Garage Internally and Garage zero lot wall)
Builders Mahala range composite cladding to section of Front Elevation
Builders Mahala range 1c external face brickwork to section of Front Elevation
Double Garage with 31c high 10mm plasterboard ceiling and concrete hardstand
Builders Mahala Architectural range auto sectional door with 3 controllers to Garage
Up to 6m long full width paved Driveway, Verandah/Portico/Porch, Alfresco and 1m wide path (from Builders 60mm Display range) (with exception of rear Garage designs which include a 2m long Driveway as standard)

31c high ceilings as displayed
Dropped ceilings at 28c to Kitchen and Kitchen Passage
10mm plasterboard 3c recessed ceiling to Alfresco
R4.0 ceiling insulation to home including Garage
Builders Display range cornice throughout internally, to Porch, to Alfresco and to Garage
Gyprock lining to all internal walls (excluding Garage and full height wall tiling areas)
Quality Dowell powder-coated aluminium sliding glass doors
Quality Dowell powder-coated aluminium breeze lock windows
Flyscreens to all aluminium opening windows and sliding doors
28c high x 1000mm wide aluminium single lite (clear glass) door and frame to Front Entry
Pull handle entry set to Front Entry door
28c high aluminium 3 panel stacker sliding door to Family/Meals / Alfresco and 28c high aluminium 2 panel sliding door to Laundry
28c high head to all aluminium windows

Corinthian Deco range solid door to Garage/Kitchen
Duracote solid door to Rear Garage
Gainsborough Trilock Contemporary door hardware to Garage/Kitchen and Rear Garage doors
2340mm high doors and frames internally (excludes Laundry, Garage/Kitchen and Rear Garage)
M&B Brentwood (translucent glass) door between Laundry and Kitchen
Corinthian Deco range honeycomb doors elsewhere internally
Builders Mahala range lever door handles to internal doors

Quality Mirrorline sliders to Minor Bedroom robes and Laundry Linen
Built-in shelving system with upgrade laminate finish and colour, contrasting upgrade laminate colour and Display range cabinet handles to Master Suite walk-in robe
Built-in shelving system to minor Bedroom robes
Built-in Linen with 4 white lined shelves

Future connect pack including TV, phone and internet point
Double power points throughout excluding Garage and appliance locations
3 external light points, 1 Garage ceiling light point and ample internal light points
Builders Display Range Clipsal Iconic light switches and power points
Flumed exhaust fan to Ensuite, Ensuite WC, Bathroom and Powder
Builders Mahala range exhaust fans throughout
Hard wired smoke detectors
2 safety switches
Lock and viewing panels to both meter boxes

Builders Mahala range plumbing fixtures and fittings (including 2nd shower set to Ensuite)
6 star gas continuous flow 26L hot water system
2 external garden taps

Two stone colours allowed to benchtops
Soft closing cabinet doors and drawers
A.B.S. edges to laminated cupboard doors and drawers

Kitchen

Builders Mahala range 40mm mitred edge stone benchtop to Kitchen
Builders Mahala range 40mm mitred edge stone waterfall ends to Kitchen (2 in total)
Builders Mahala range 20mm thick x 260mm high stone splashback to Kitchen
Chalk finish laminate to Kitchen
Contrasting standard finish laminate kickboard to Kitchen
Pot drawers to Kitchen
Overhead cupboards to Kitchen
Laminated pantry with 4 white lined shelves to Kitchen
Push catch handles to fridge recess cupboards, pantry doors and cupboard over microwave to Kitchen
10mm finger pull handles to all remaining overhead cupboards to Kitchen
30mm recessed finger groove handles to all remaining cabinetry to Kitchen
Two Hettich ArcTech 450mm wide bins to full height Kitchen drawer (concealed drawer at top)
One Electrolux dark stainless steel 600mm multi-function electric oven to Kitchen
Electrolux 900mm black ceramic glass gas hot plate to Kitchen
AEG stainless steel 120cm ceiling rangehood (DCE5280HM) to Kitchen
Electrolux clark stainless steel microwave with tim kit to Kitchen
Electrolux fully integrated dishwasher with cold tap, single power point and laminate panel to match adjacent Kitchen cabinet doors
Standard mirror as splashback above stone splashback to Kitchen

Laundry, Ensuite, Bathroom and Powder

Builders Mahala range 20mm thick stone benchtops to Laundry, Ensuite, Bathroom and Powder (no waterfall ends)
Chalk finish laminate to Laundry, Ensuite, Bathroom and Powder
Overhead cupboards to Laundry
Two sets of two drawers to Ensuite vanity and Bathroom vanity
One set of two drawers to Powder vanity
10mm finger pull handles to overhead cupboards to Laundry
30mm recessed finger groove handles to all remaining cabinetry to Laundry, Ensuite, Bathroom and Powder
Automatic washing machine taps
Full height wall tiling to Ensuite, Ensuite WC, Bathroom and Powder
Floor tiling to Laundry, Ensuite, Ensuite WC, Bathroom and Powder
Tiled ledge to Ensuite shower recess
Tiled ledge to entire length of Bathroom shower recess/vanity/bath wall
Tiled low wall between Bathroom shower recess and vanity
Builders Mahala range toilet roll holders and towel rails
Two 10mm thick frameless clear glazed fixed shower screen panels to Ensuite (with brushed nickel fittings)
10mm thick frameless clear glazed fixed shower screen panels and hinged door to Bathroom (with brushed nickel fittings and handle)
1390mm high frameless full vanity width mirror to Ensuite
Two 1460mm high frameless mirrors to Bathroom
1290mm high frameless mirror to Powder
Tile insert floor wastes
Hobless showers to Ensuite and Bathroom
Mitred tiled edges throughout
1675mm long bath to Bathroom

Linen cabinet with standard finish laminate and push catch handles to Meals